

Saturday 9/12 • 3-4pm

Please note
schedule is
subject to change.

Animation

On Campus with Jack and Randle (8:30min)

Shawn McDaniel, MD.

When 2 college losers, Jack and Randle, have limited channels in their dorm due to the prig Manciple Jones, a commercial incites them with a homicidal option to put an end to his pedantry. This is a claymation with traditional hand-drawn 2D elements. *World Premiere*

Morning Coffee (1min)

Tracy Miller-Robbins, Ohio

Peering into one's coffee, time moves in a different way. Part dream, part daydream while one gains consciousness.

Out of Order (3:25min)

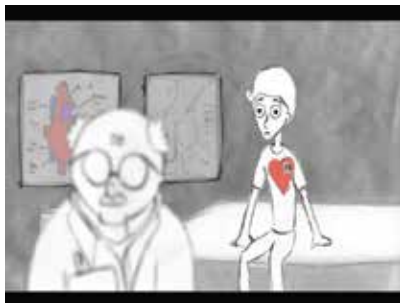
Nathaniel Shrage, California

A young man must find his mechanical heart's missing gear or find a replacement part. *World Premiere*

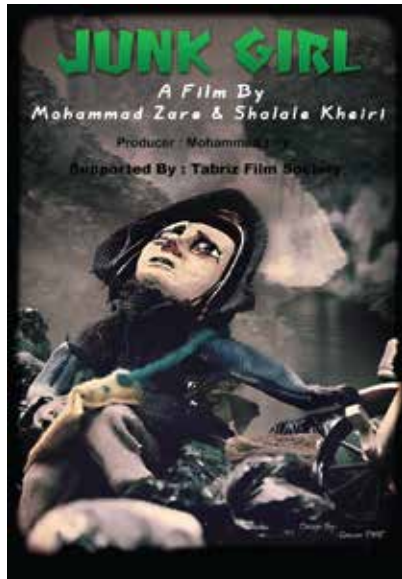
Junk Girl (15min)

Mohammad Zare, Iran

"There once was a girl who was...junk."



Out of Order



Junk Girl Poster

Experimental

Privy (20min)

DAVID FINKELSTEIN, Brooklyn, NY

A young woman is forced to live with an unsympathetic stepmother, and spends much of her time in an outhouse, escaping into books and her own vivid fantasy life. *World Premiere*

Into Abstraction (8min)

Walter Smith, SC

The complexity of the impermanence that fosters ambiguity in our lives. Everything changes except a persistent memory.

Saturday 9/12 • 4-6pm

Please note
schedule is
subject to change.

Short Drama

Resting Places: A Ballet Film 9min

Adam Stone, Carbondale, Illinois

When we stop believing in our dreams, we die. Nadia Mara and Heath Gill star in this ballet film about a successful businesswoman who has forsaken her childhood dream of becoming a professional dancer.

Blind Date (8min)

Darren Rudy, Arizona

Dating is complicated enough, but when trying to meet "Peep2Peep", this young couple confront the silent film near-misses of modern times.

Housekeeping (32min)

Shane Killian, NC

Gary Davidson has seen better days. A sales executive struggling with booze and gambling, his job performance has slipped.

The Cart (6min)

Patrik Eriksson, Poland

A girl is pushing a fish in a water filled cart across a dark plain. The cart is leaking, and mysterious beings are attracted to the struggle. *World Premiere*

Lies Beneath the Nightshade 10m

Andrew Wecht, SC, World Premier

Anthony is dragged away to prison leaving an ailing Basilio, his grandfather, alone to upkeep the beloved garden.

Until Death (6min)

Erica Chan, Nevada

Mia searches for closure over her fiance's death while also battling Anna, his mother, who has animosity towards her. Mia fears the repercussions she may get from his mother, but she must say goodbye to her fiance.

Southern Roots (8min)

Elizabeth Serral, FSU Film Major

Macayla, new to the North, struggles to keep her Tennessee upbringing under wraps, before realizing she and her sassy Southern mother, are truly unique.

The Soft Shelled Crab and the Metal Claw (14min)

Joseph Accardi, NJ

The Soft Shell Crab and the Metal Claw follows Wei Tang, a Chinese woman in her mid 20s, who finds herself enslaved by the bonds of marriage to an abusive husband.

more Short Drama next page



Lies Beneath the Nightshade